



GARDENS
INTERNATIONAL


HENRY ST, LIMERICK

GARDENS

— I N T E R N A T I O N A L —

KEY CAPTURES

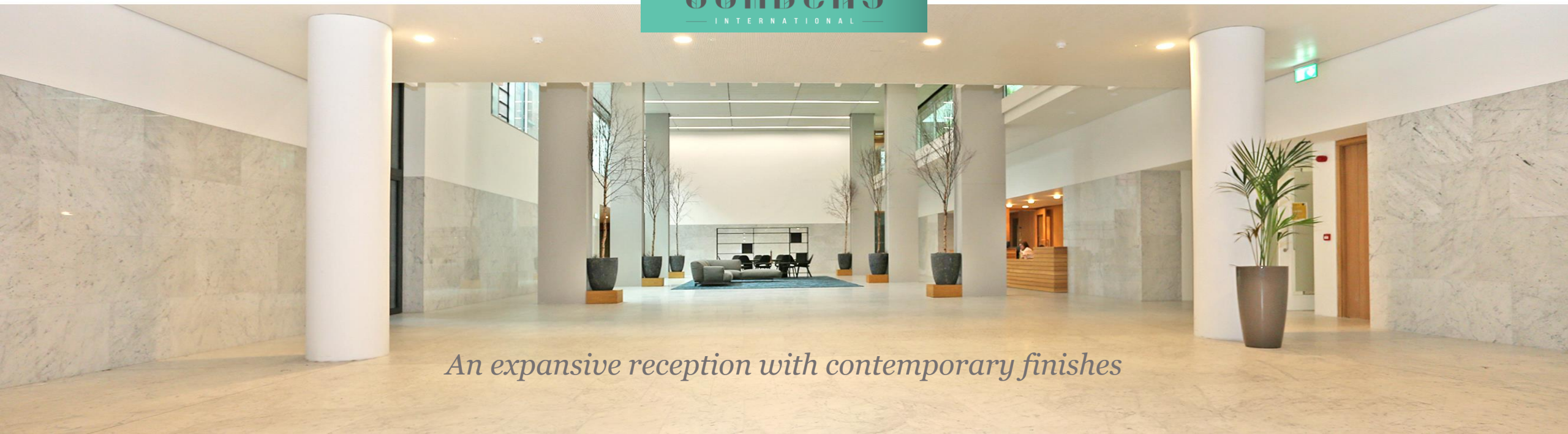
- ***LEED Gold**, Grade A Office Accommodation*
- ***Vibrant City Centre Location – Limerick City Centre***
- ***Fully Fitted (CAT B) Office Accommodation Available***
- ***Options from 306.6 sq m (3,300 sq ft)– 2,787sq m (30,000 sq ft)***
- ***Available for immediate occupation***
- ***4TH & 5TH Floor***
- ***Floor Plates C. 11,166 sq ft – 14,430 sq ft***



The impressive entrance is framed by a restored original 19th century arched structure leading to an expansive reception with contemporary finishes where you immediately get a sense of the quality of this building.



GARDENS
INTERNATIONAL



An expansive reception with contemporary finishes

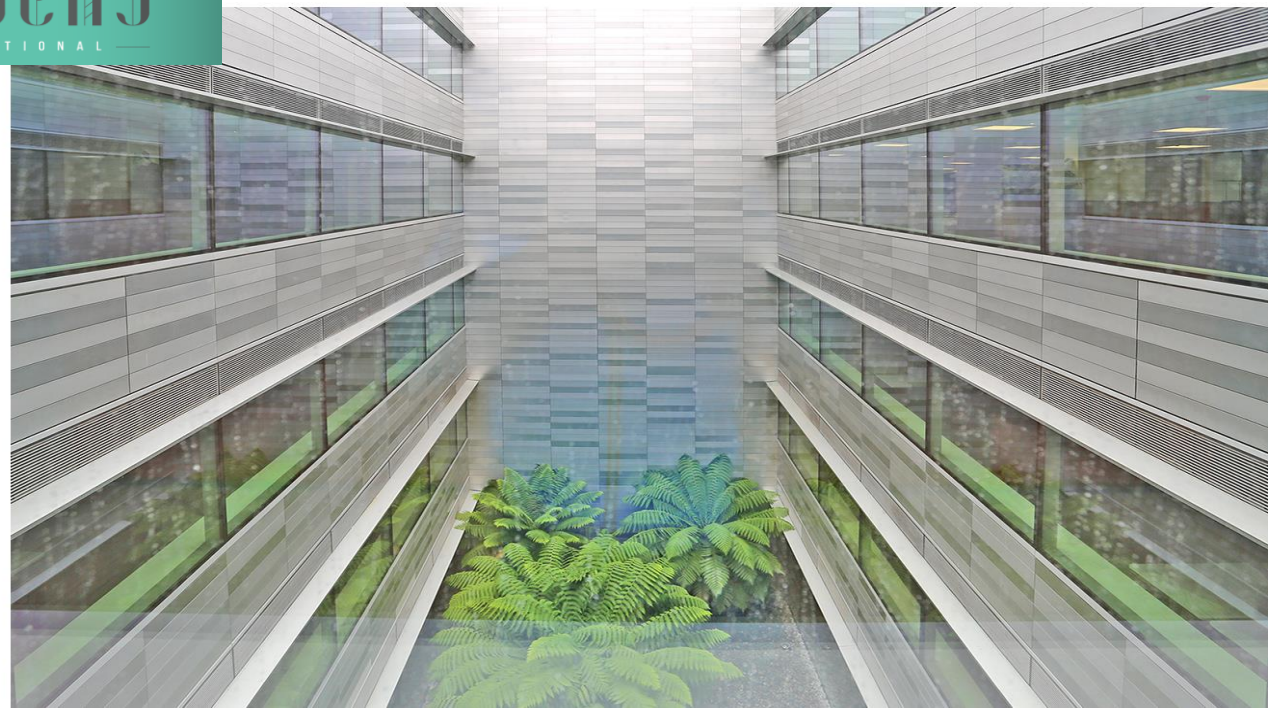






A VISIONARY
PAST.
A VIBRANT
FUTURE.







Each floor is finished to the highest specification

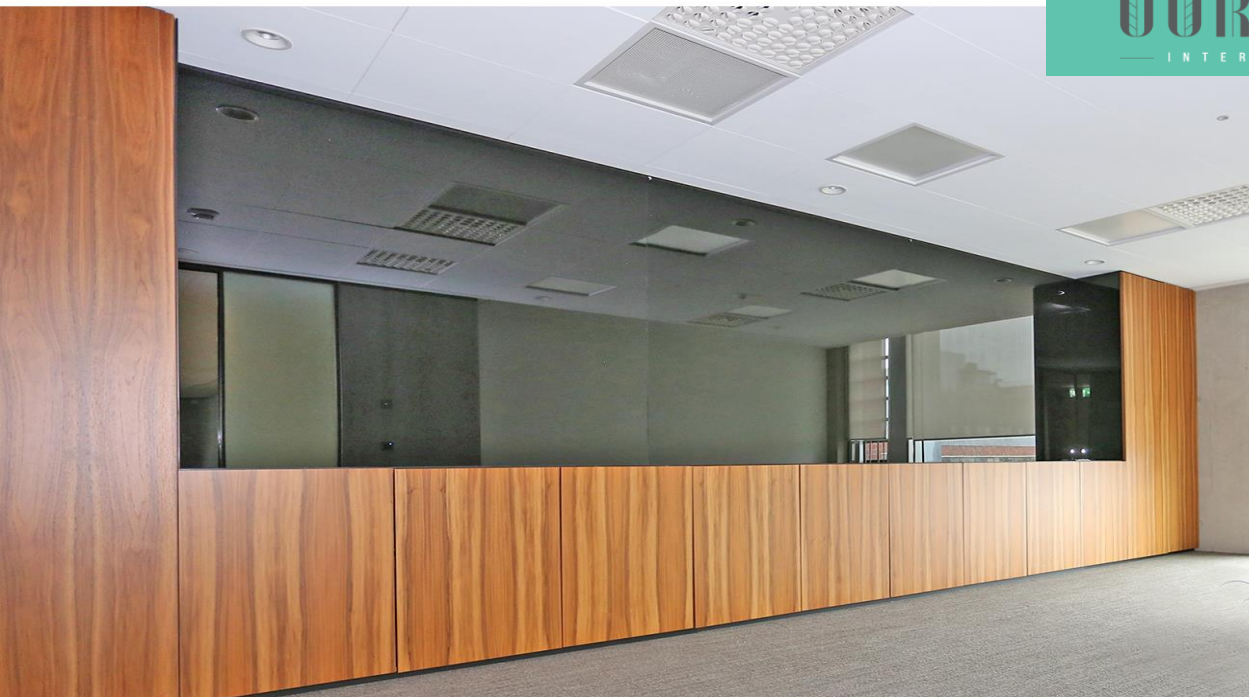




Combination of open plan & cellular office configuration



GARDENS
INTERNATIONAL











STUNNING
VIEWS OF
A VIBRANT
CITY







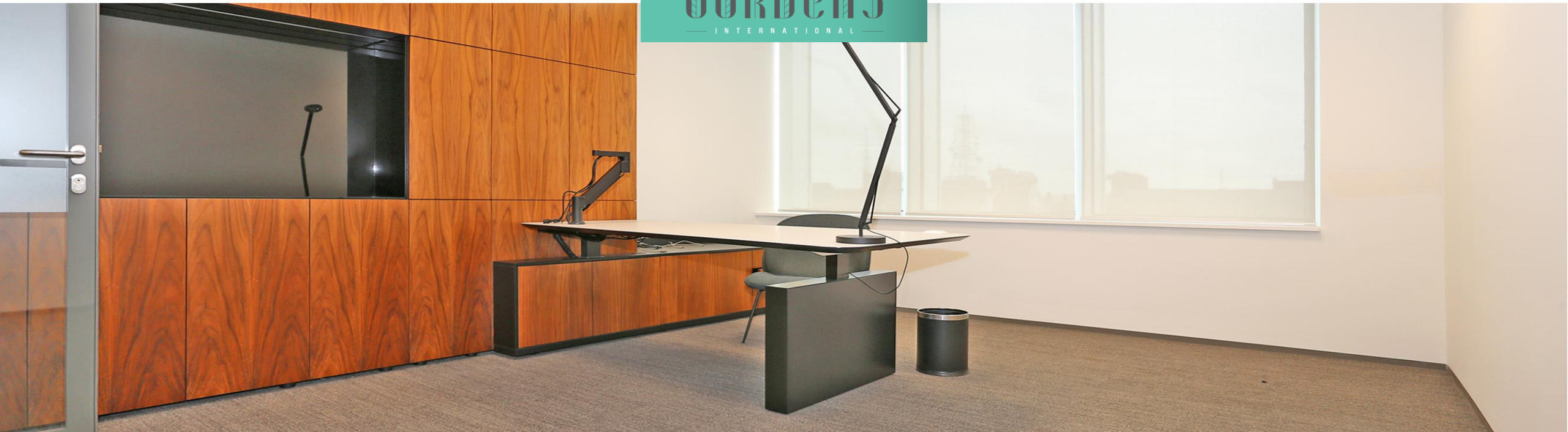








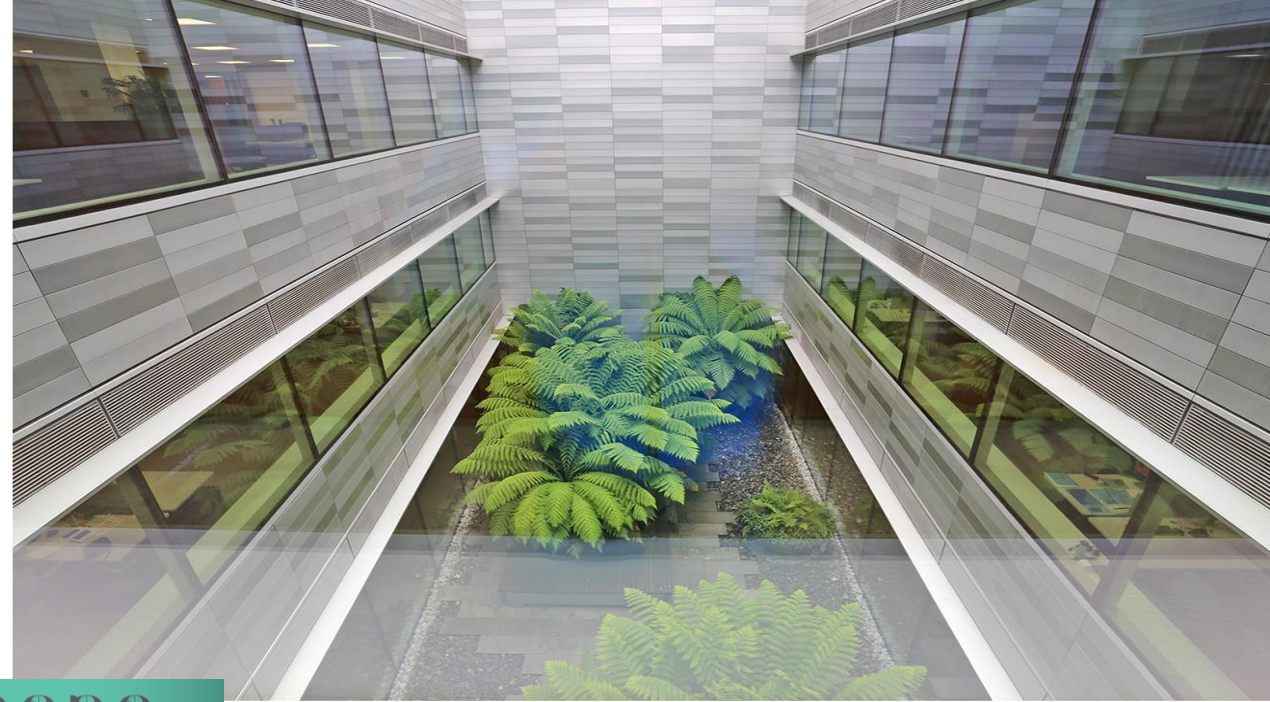
GARDENS
— INTERNATIONAL —



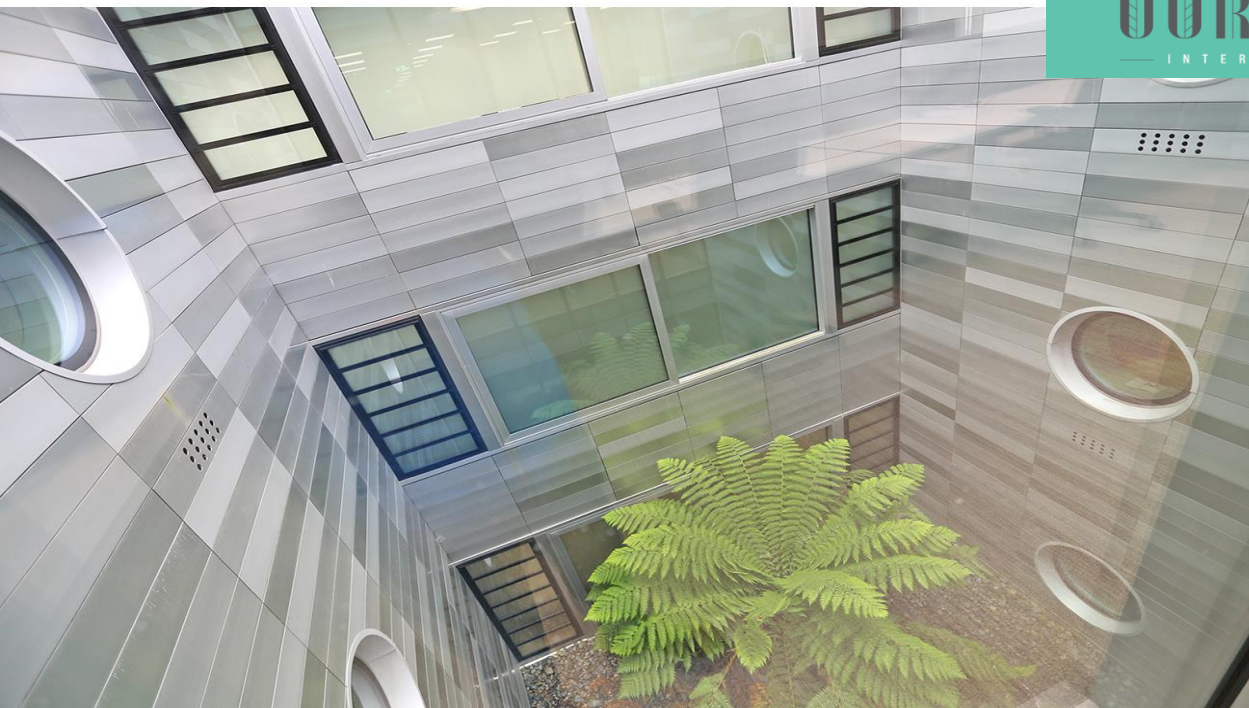






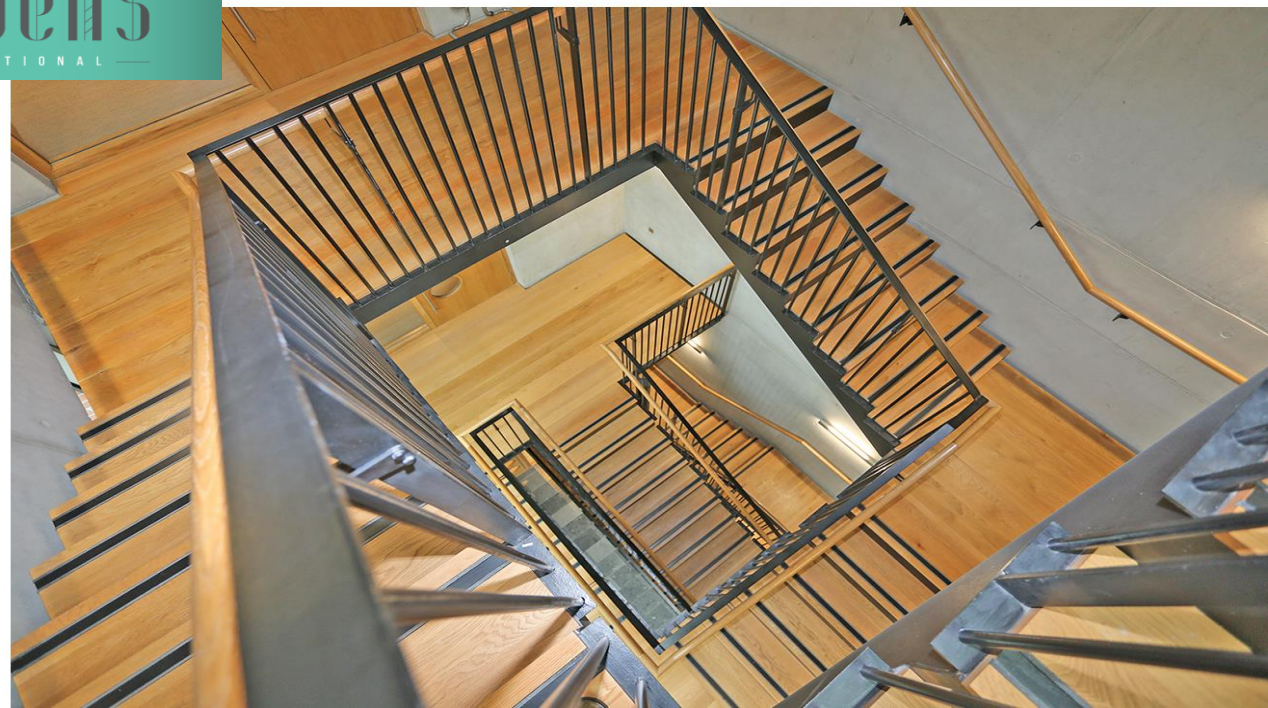
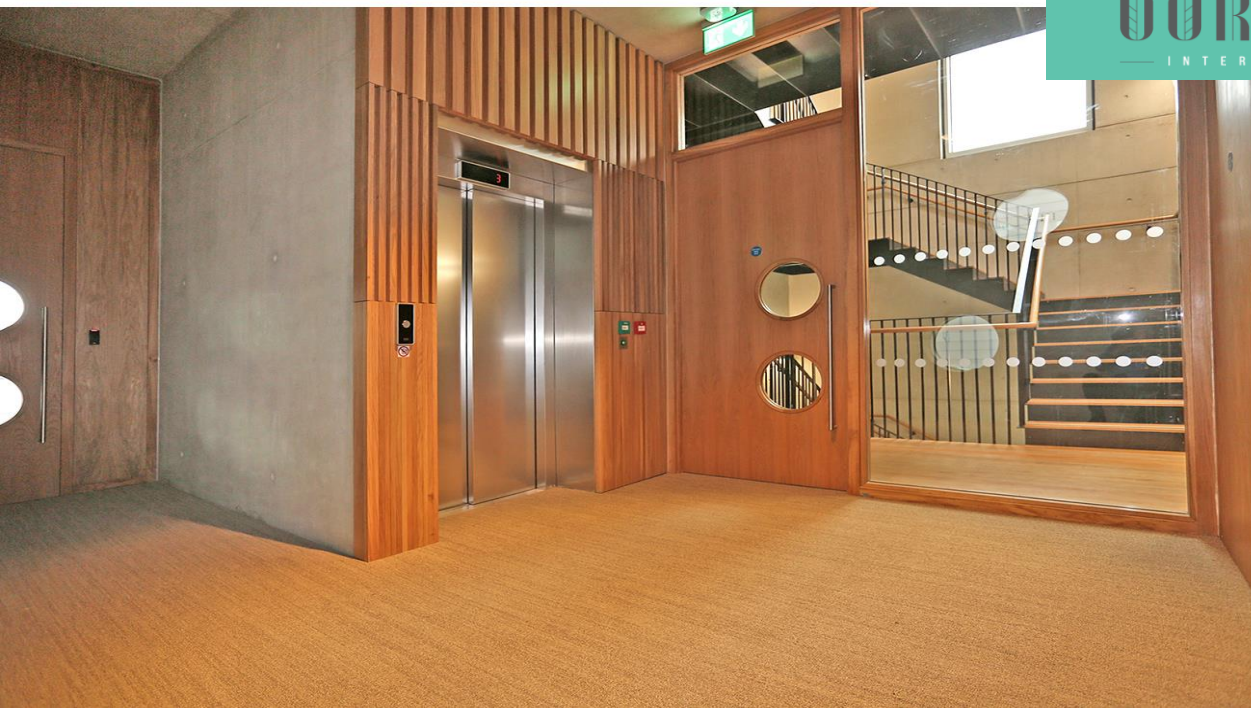


GARDENS
— INTERNATIONAL —





GARDENS
— INTERNATIONAL —

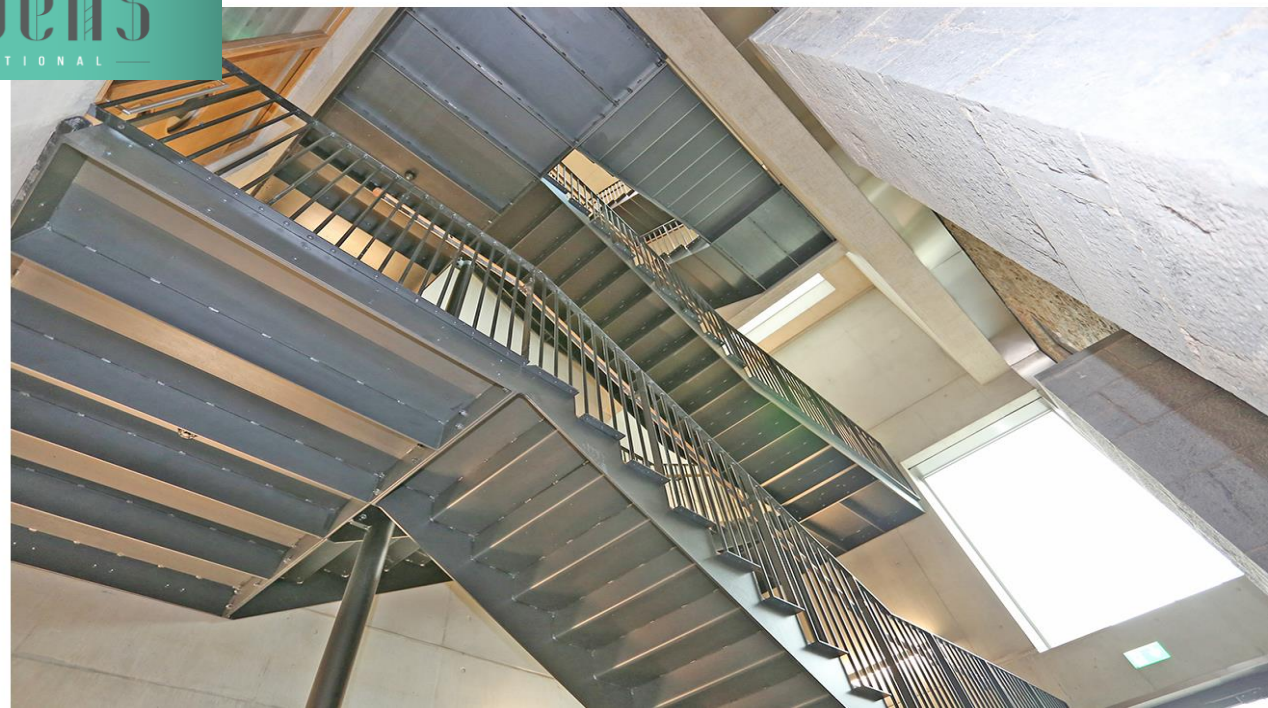
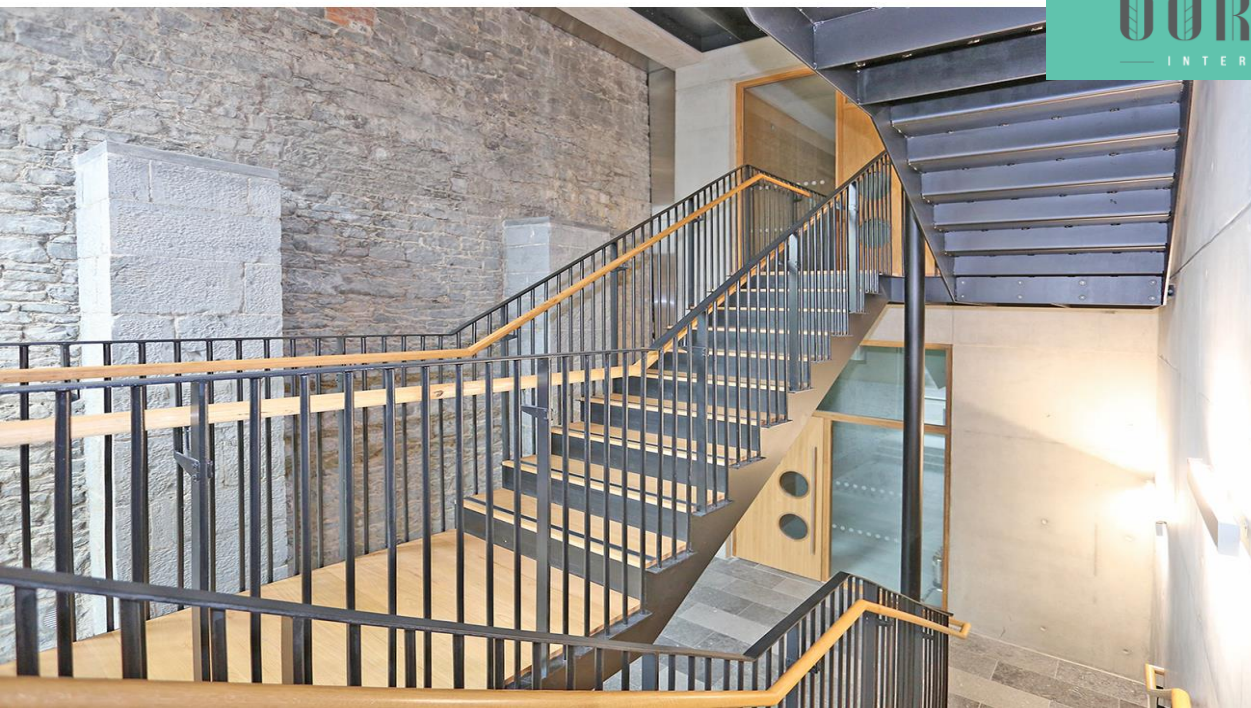








GARDENS
— INTERNATIONAL —





GARDENS

— INTERNATIONAL —

For further information contact



**CUSHMAN &
WAKEFIELD**

+353 61 418 111

GARDENS

— INTERNATIONAL —

GARDENS INTERNATIONAL, HENRY STREET, LIMERICK